

CORNER RECORD

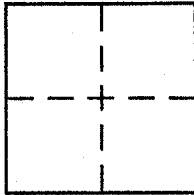
Document Number 2001-040 B

City of Garden Grove

County of Orange, California

Chapman Ave. @ Harris St. & Ellen St.

Brief Legal Description _____



CORNER TYPE

Government Corner Control
 Meander Property
 Rancho Other **XX**
 Date of Survey 10/10/00

COORDINATES (Optional)

N. _____
 E. _____
 Zone _____ NAD27 NAD83
 NAD83 Epoch _____
 Elev. _____
 Vert. Datum: NGVD29 NAVD88
 Meas. Units: Metric Imperial

Corner -- Left as found Found and tagged Established Reestablished **XX** Rebuilt

Identification and type of corner found: Evidence used to identify or procedure used to establish or reestablish the corner:

Found as described on the reverse of this sheet. Points tied out 3/28/00 prior to the paving efforts by the
City of Garden Grove.

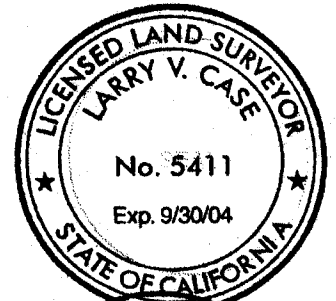
A description of the physical condition of the monument as found and as set or reset: _____

These ties are for the purpose of perpetuating the found monumentation. No claim is made as to the
relationship of the points or lines shown hereon to true boundary location.

SURVEYOR'S STATEMENT

This Corner Record was prepared by me or under my direction in conformance with
 the Land Surveyor's Act on November 21, 2000

Signed [Signature] P.L.S or R.C.E. No. _____ L.S. 5411



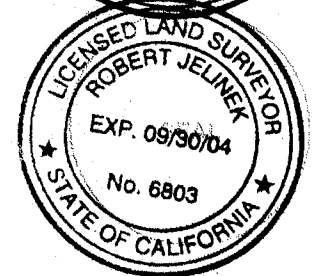
COUNTY SURVEYOR'S STATEMENT

This Corner Record was received APR 11 2001

and examined and filed April 17th 2001

Signed [Signature] P.L.S or R.C.E. No. 6803

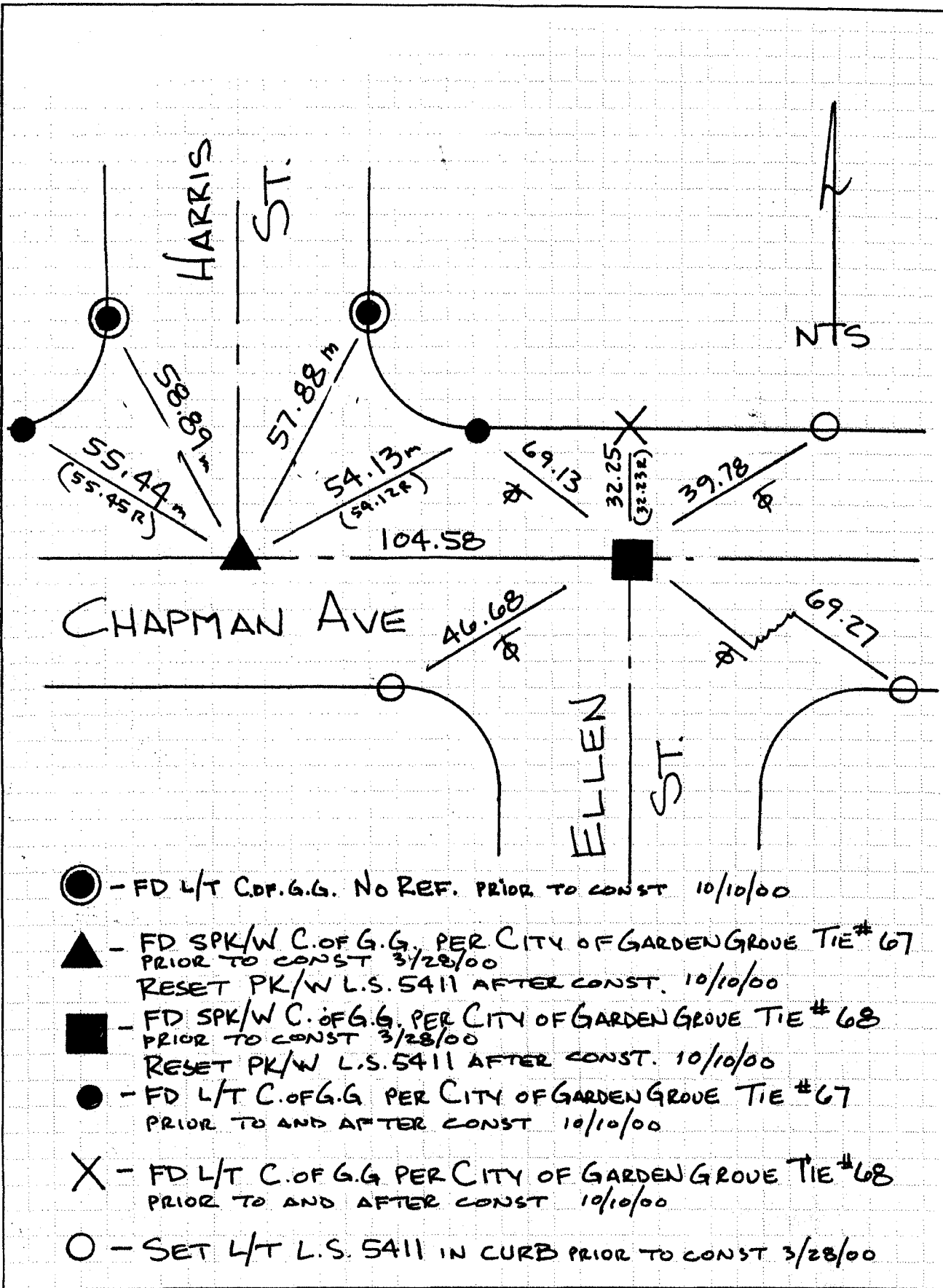
Title DEPUTY COUNTY SURVEYOR



County Surveyor's Comment _____

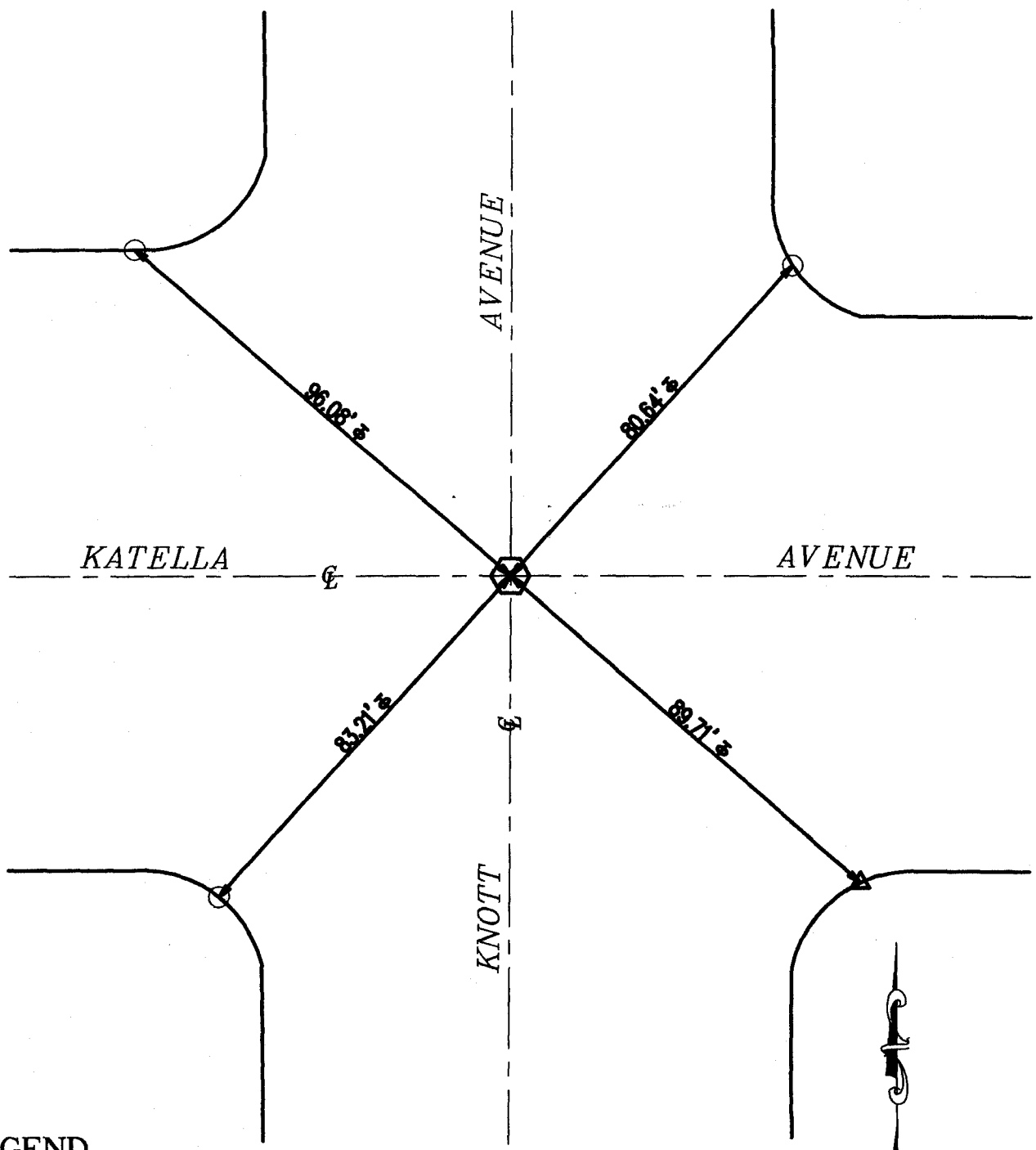
POST - CONSTRUCTION

SEE CR 2001-026 for pre



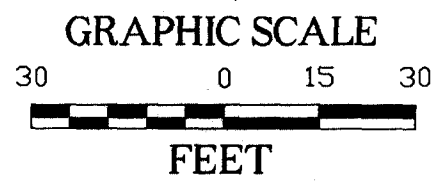
- - FD L/T C.O.F.G.G. NO REF. PRIOR TO CONST 10/10/00
- ▲ - FD SPK/W C.O.F.G.G. PER CITY OF GARDEN GROVE TIE # 67
PRIOR TO CONST 3/28/00
RESET PK/W L.S. 5411 AFTER CONST. 10/10/00
- - FD SPK/W C.O.F.G.G. PER CITY OF GARDEN GROVE TIE # 68
PRIOR TO CONST 3/28/00
RESET PK/W L.S. 5411 AFTER CONST. 10/10/00
- - FD L/T C.O.F.G.G. PER CITY OF GARDEN GROVE TIE # 67
PRIOR TO AND AFTER CONST 10/10/00
- X - FD L/T C.O.F.G.G. PER CITY OF GARDEN GROVE TIE # 68
PRIOR TO AND AFTER CONST 10/10/00
- - SET L/T L.S. 5411 IN CURB PRIOR TO CONST 3/28/00

STREET CENTERLINE TIES



LEGEND

○	= SET L/T LS 4240 TYP. / TANGENT OVER
⊗	= S & W CTY ENG.
△	= FD NAIL
⊕	= TANGENT OVER.



CALVADA

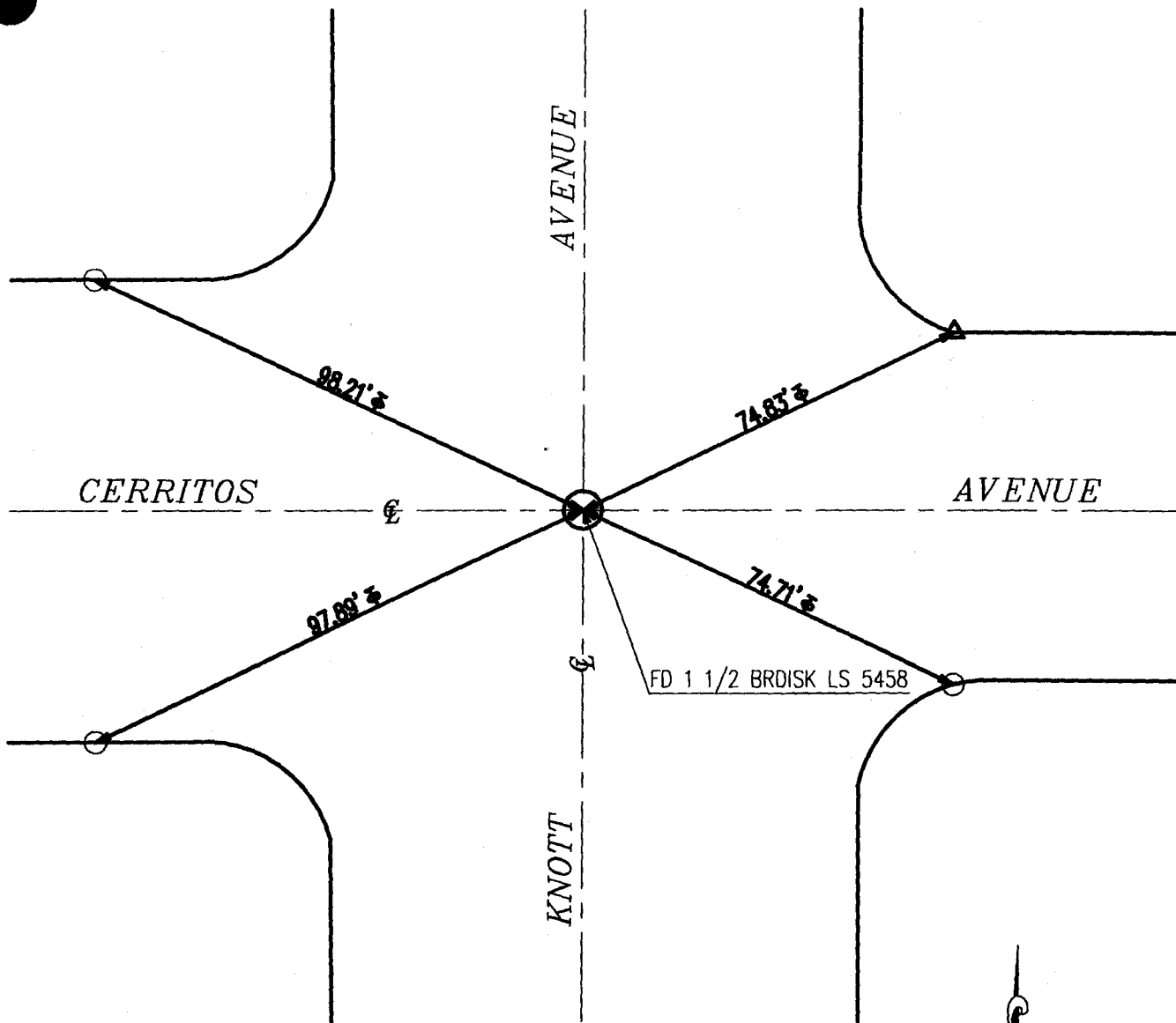
SURVEYING, INC.

108 Business Center Drive, Corona, CA 92880-1782 Phone: (909) 280-9960 Fax: (909) 280-9746 (800) CALVADA (225-8232)

Job No 02232

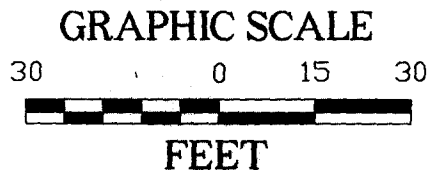
www.calvada.com

STREET CENTERLINE TIES



LEGEND

○	= SET L/T LS 4240 TYP. / TANGENT OVER
⊕	= FD WELL MON W/BRASS DISK LS 5458
△	= FD 1 1/2 BR DISK
⊕	= TANGENT OVER.



CAL VADA

Job No 02232

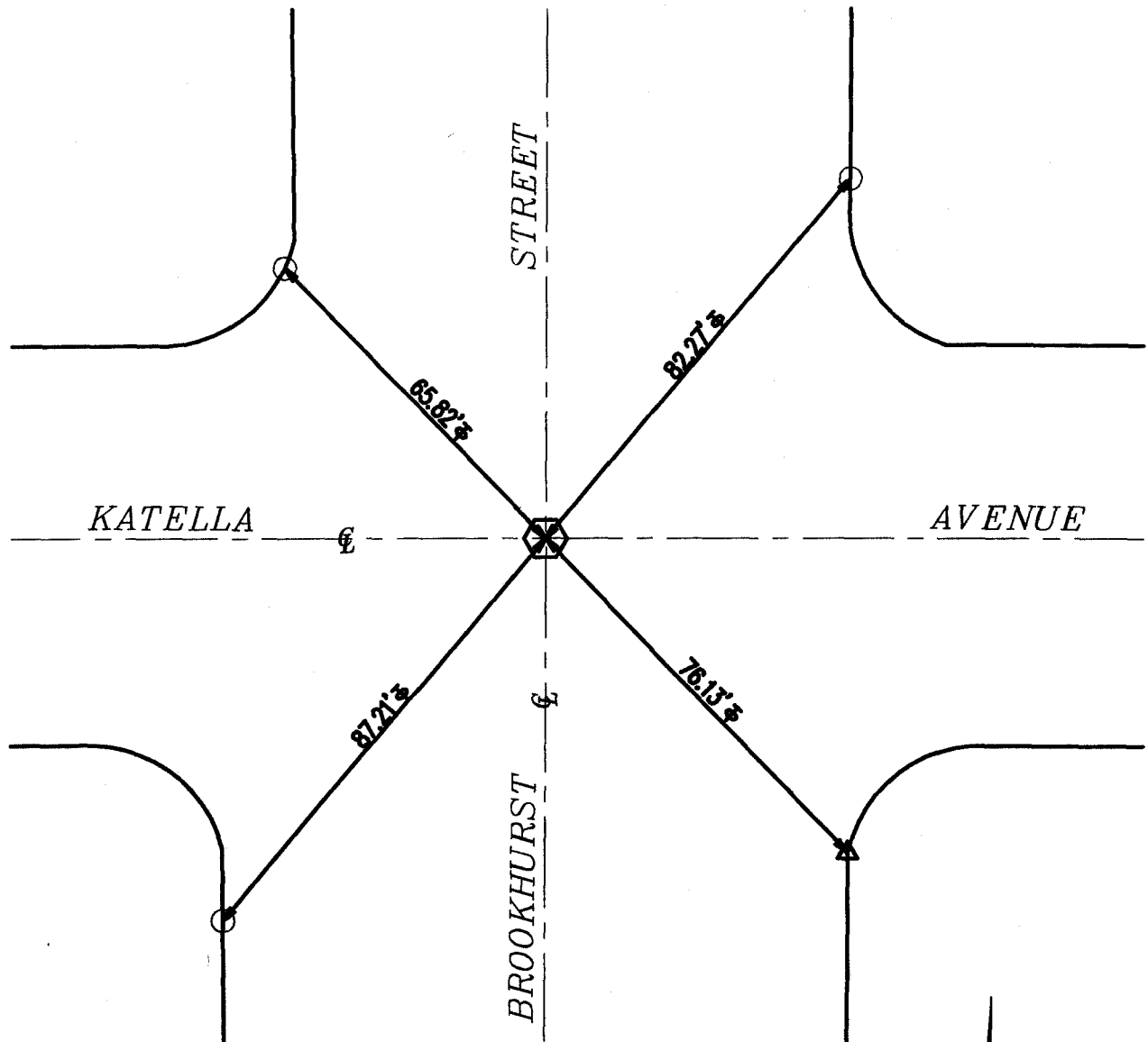
SURVEYING, INC.

Los Angeles • San Francisco • Denver • Phoenix

www.calvada.com

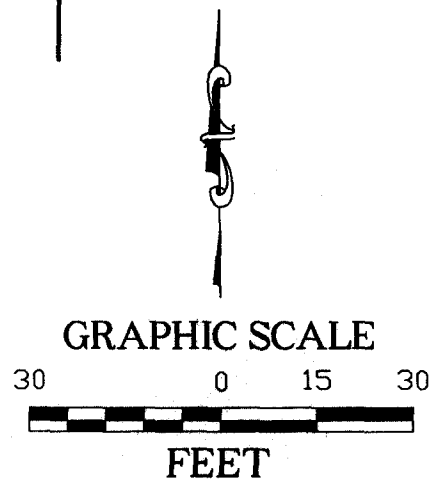
108 Business Center Drive, Corona, CA 92880-1782 Phone: (909) 280-9960 Fax: (909) 280-9746 (800) CALVADA (225-8232)

STREET INTERSECTION TIES



LEGEND

○	= SET L/T LS 4240 TYP. / TANGENT OVER
⊙	= FD WELL MON W/HEX BAR TYP.
△	= L/T CITY OF ANAHEIM SURVEYOR
⊕	= TANGENT OVER.



CALVADA

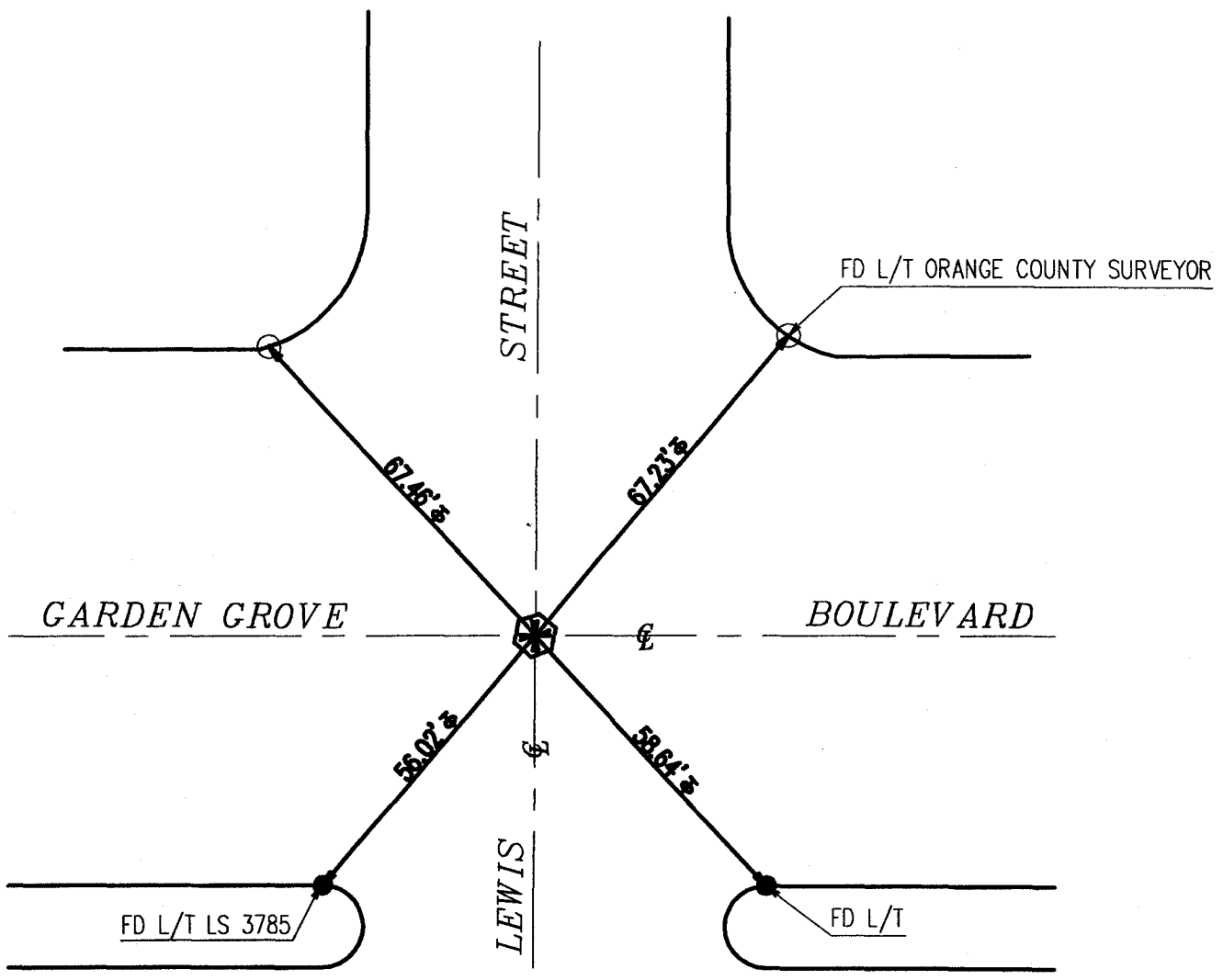
SURVEYING, INC.

Los Angeles • San Francisco • Denver • Phoenix

Job No 02232

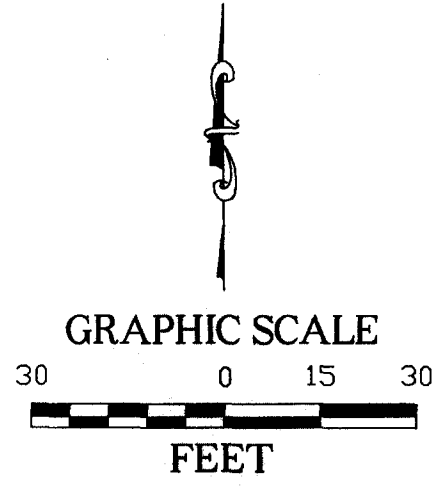
108 Business Center Drive, Corona, CA 92880-1782 Phone: (909) 280-9960 Fax: (909) 280-9746 (800) CALVADA (225-8232) www.calvada.com

STREET CENTERLINE TIES



LEGEND

○	= SET L/T LS 4240 TYP. / TANGENT OVER
⊗	= FD WELL MON W/HEX BAR TYP.
⊕	= TANGENT OVER.

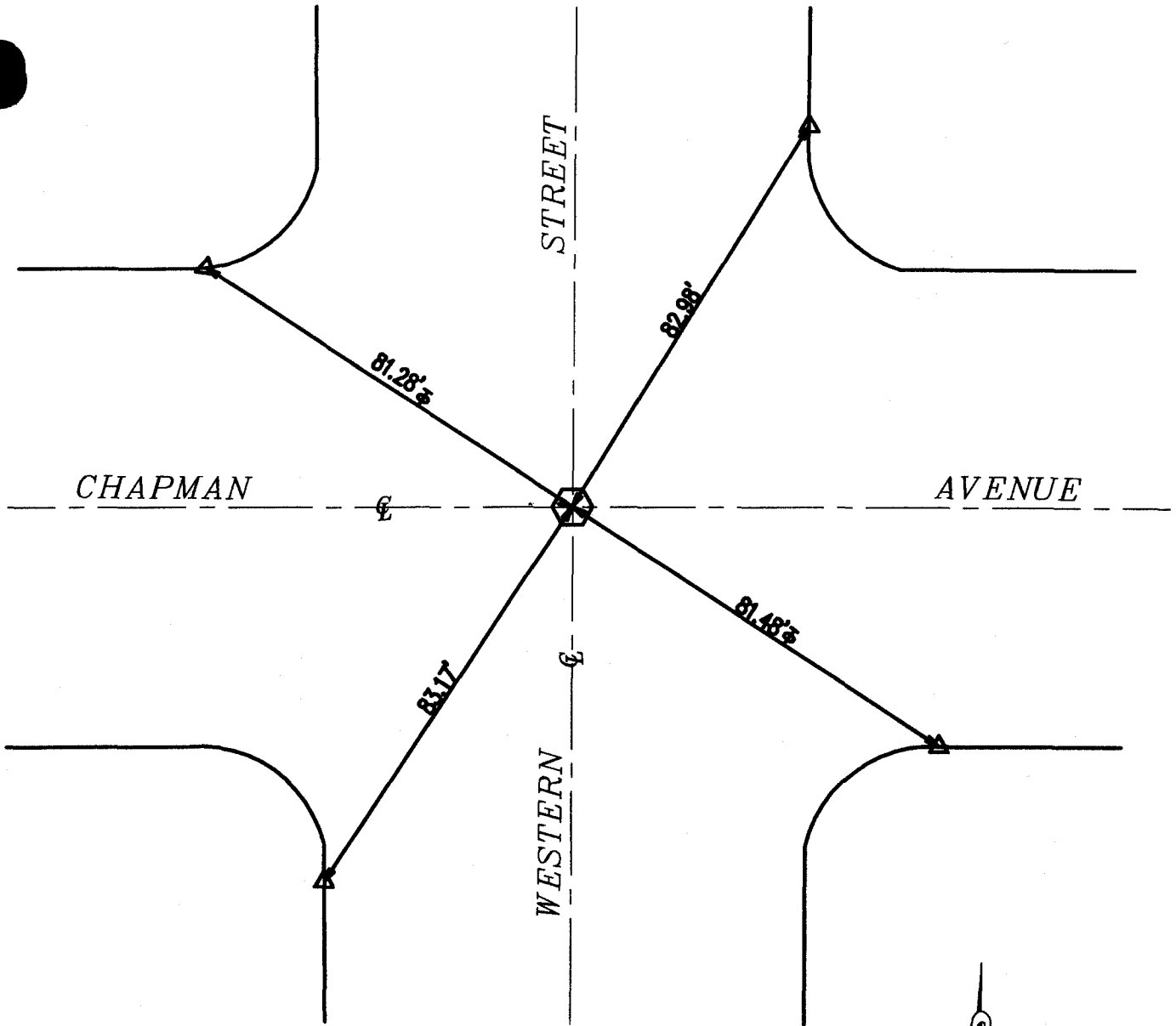


CALVADA

Job No 02232

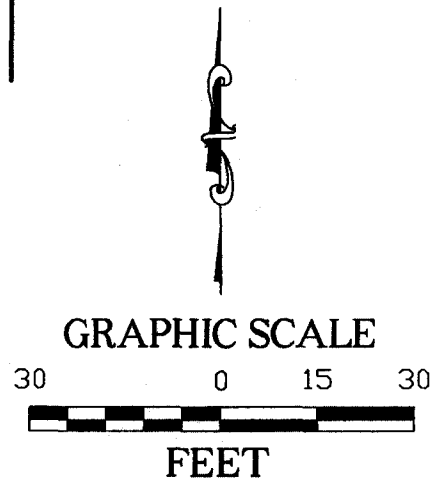
SURVEYING, INC. Los Angeles • San Francisco • Denver • Phoenix
 108 Business Center Drive, Corona, CA 92880-1782 Phone: (909) 280-9960 Fax: (909) 280-9746 (800) CALVADA (225-8232) www.calvada.com

STREET CENTERLINE TIES



LEGEND

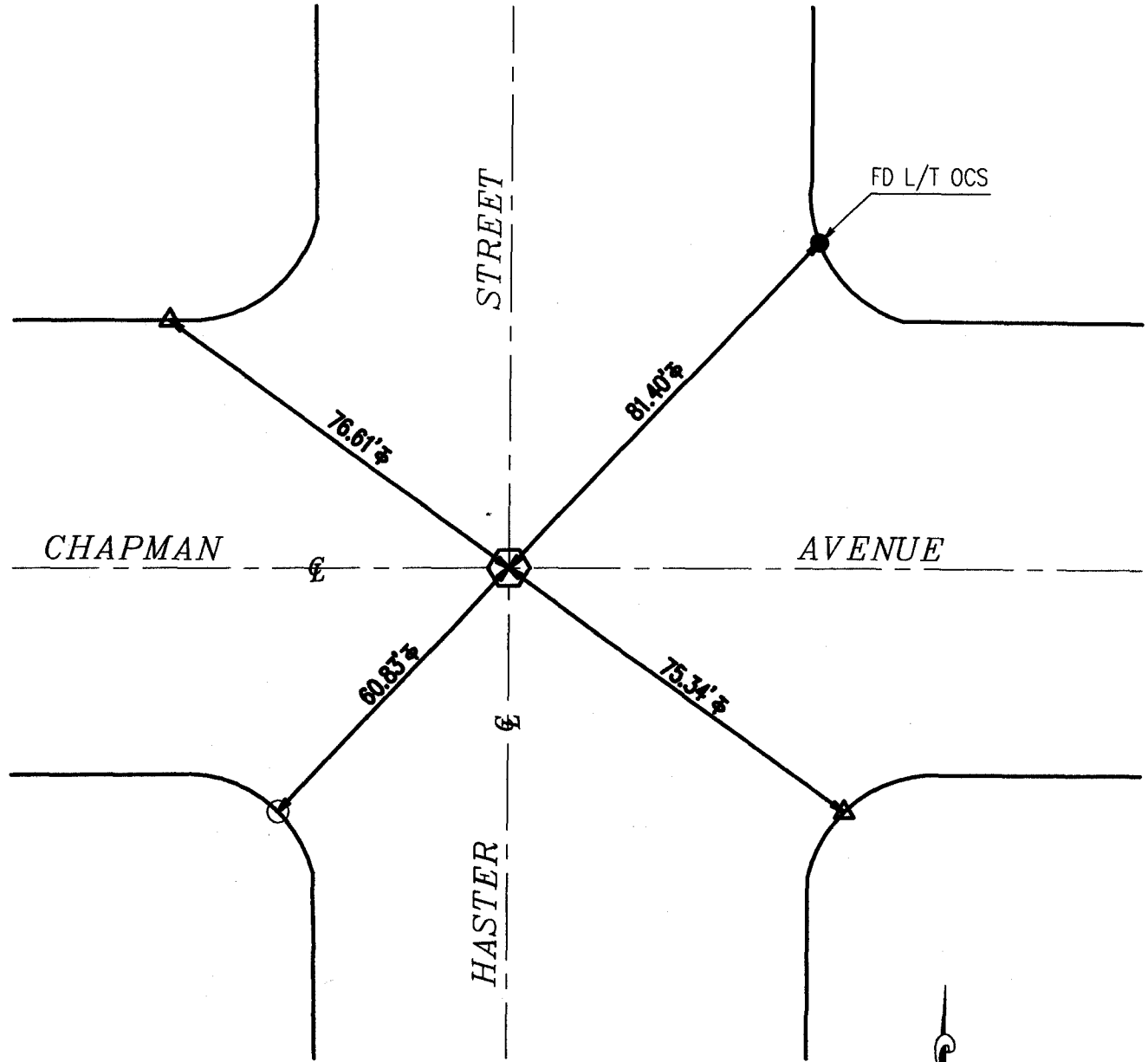
	= FD WELL MON W/HEX BAR TYP.
	= L/T CITY OF GARDEN GROVE SURVEYOR
	= TANGENT OVER.



CAL VADA
SURVEYING, INC.

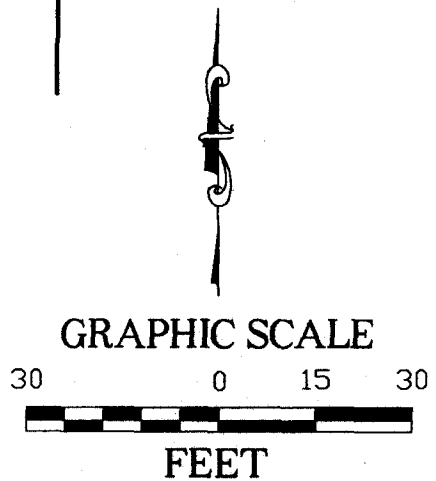
Job No 02232

STREET INTERSECTION TIES



LEGEND

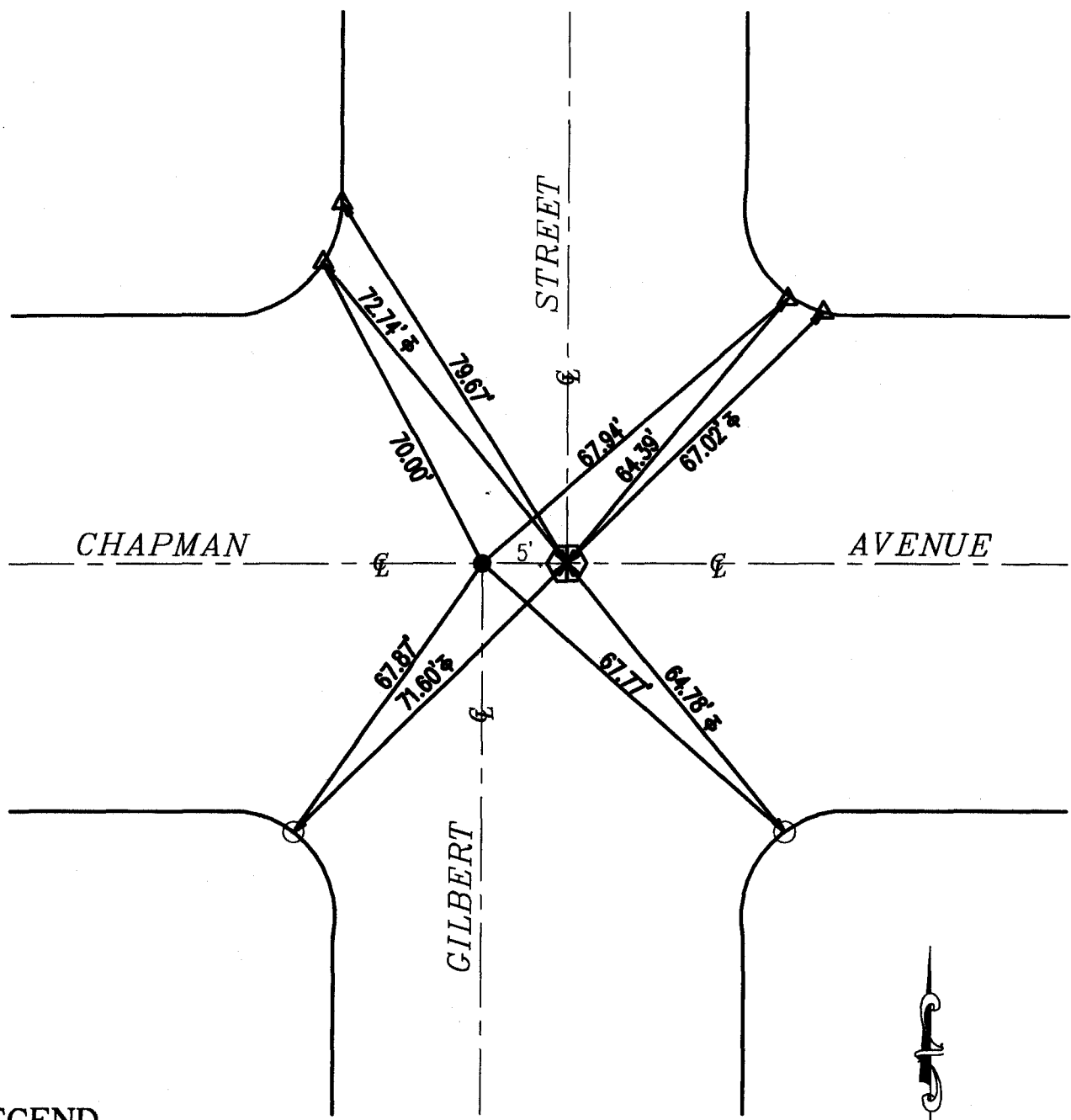
- = SET L/T LS 4240 TYP. / TANGENT OVER
- ⊗ = FD WELL MON W/HEX BAR TYP.
- △ = L/T GARDEN GROVE SURVEYOR TAG
- ⊕ = TANGENT OVER.



CALVADA
SURVEYING, INC.

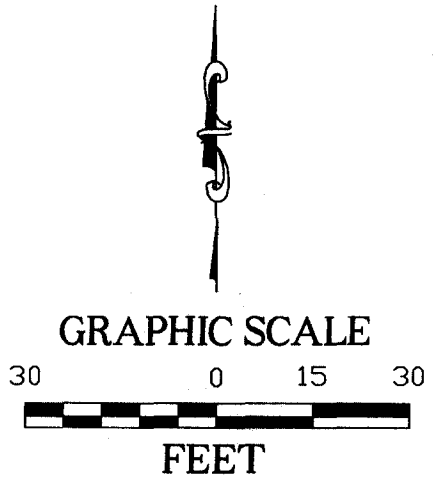
Job No 02232

STREET CENTERLINE TIES

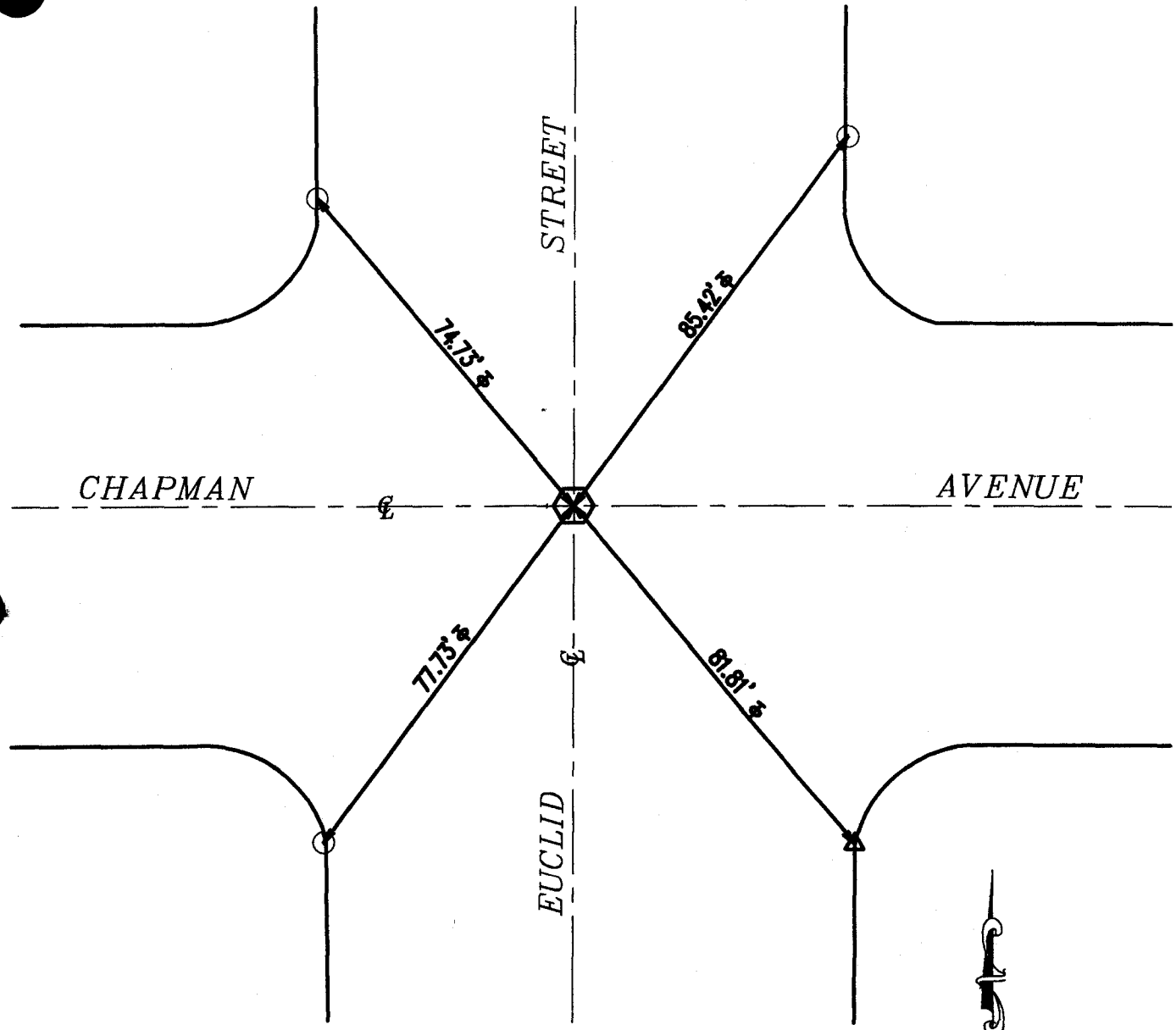


LEGEND

⬡	= FD WELL MON W/HEX BAR TYP.
△	= L/T CITY OF GARDEN GROVE SURVEYOR
○	= SET L/T LS 4240 TYP. / TANGENT OVER.
●	= SPK/W CITY OF GARDEN GROVE SURVEYOR
⊕	= TANGENT OVER.

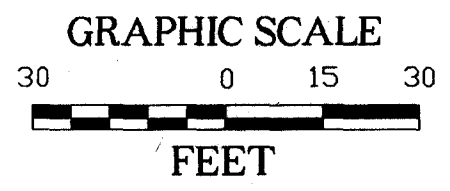


STREET CENTERLINE TIES



LEGEND

○	= SET L/T LS 4240 TYP. / TANGENT OVER
⊗	= FD WELL MON W/HEX BAR TYP.
△	= L/T CITY OF GARDEN GROVE SURVEYOR
⊕	= TANGENT OVER.



CAL VADA

SURVEYING, INC.

Los Angeles • San Francisco • Denver • Phoenix

Job No 02232

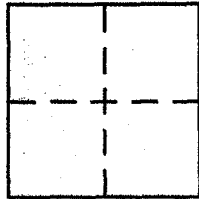
108 Business Center Drive, Corona, CA 92880-1782 Phone: (909) 280-9960 Fax: (909) 280-9746 (800) CALVADA (225-8232) www.calvada.com

CORNER RECORD

Document Number 2001-026 A

City of Garden Grove County of Orange, California

Brief Legal Description Chapman Ave. @ Harris St. & Ellen St.



CORNER TYPE

Government Corner Control
Meander Property
Rancho Other
Date of Survey 3/28/00

COORDINATES (Optional)

N. _____
E. _____
Zone NAD27 NAD83
NAD83 Epoch _____
Elev. _____
Vert. Datum: NGVD29 NAVD88
Meas. Units: Metric Imperial

Corner - Left as found Found and tagged Established Reestablished Rebuilt

Identification and type of corner found: Evidence used to identify or procedure used to establish or reestablish the corner:

Found as described on the reverse of this sheet. Points tied out 3/28/00 prior to the paving efforts by the City of Garden Grove.

A description of the physical condition of the monument as found and as set or reset: _____

These ties are for the purpose of perpetuating the found monumentation. No claim is made as to the relationship of the points or lines shown hereon to true boundary location.

SURVEYOR'S STATEMENT

This Corner Record was prepared by me or under my direction in conformance with the Land Surveyor's Act on November 17, 2000

Signed [Signature] P.L.S or R.C.E. No. L.S. 5411

COUNTY SURVEYOR'S STATEMENT

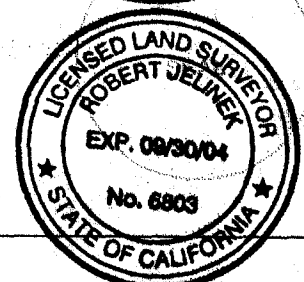
This Corner Record was received APR 11 2001

and examined and filed April 17th 2001

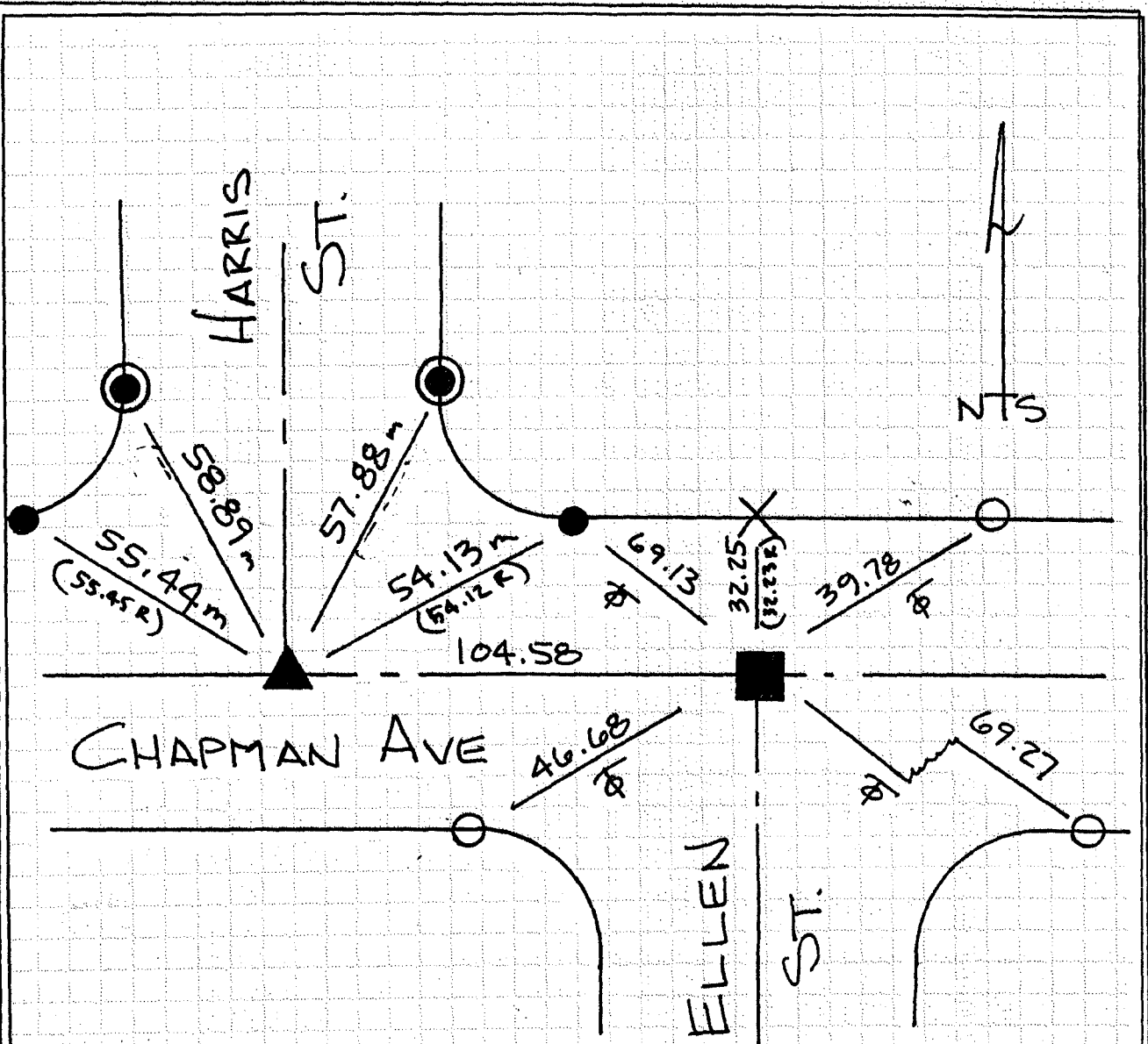
Signed [Signature] P.L.S or R.C.E. No. 6803

Title DEPUTY COUNTY SURVEYOR

County Surveyor's Comment _____



PRE - CONSTRUCTION



- - FD L/T C OF G.G. No REF. PRIOR TO CONST. 10/10/00
- ▲ - FD SPK/W C.OF G.G. PER CITY OF GARDEN GROVE TIE # 67 PRIOR TO CONST 3/28/00
- - FD SPK/W C. OF G.G. PER CITY OF GARDEN GROVE TIE # 68 PRIOR TO CONST. 3/28/00
- - FD L/T C.OF G.G PER CITY OF GARDEN GROVE TIE # 67 PRIOR TO CONST. 3/28/00
- X - FD L/T C.OF G.G PER CITY OF GARDEN GROVE TIE # 68 PRIOR TO CONST. 3/28/00
- - SET L/T L.S. SAIL IN CURB PRIOR TO CONST 3/28/00